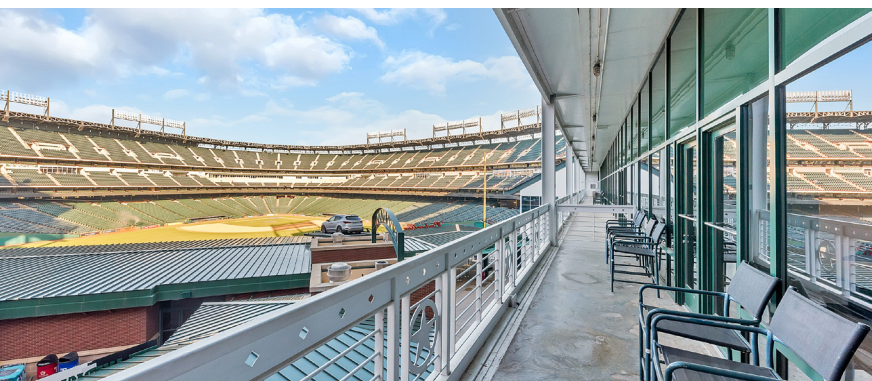
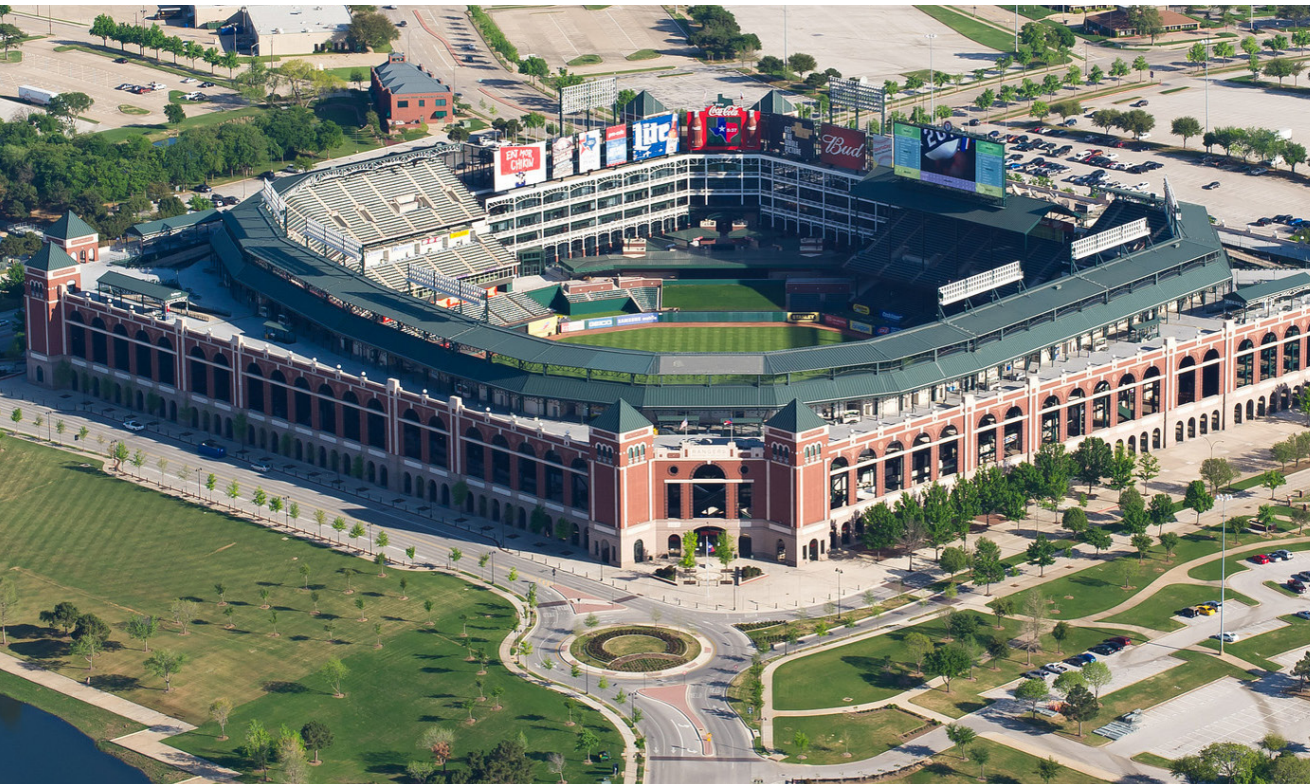


# CENTER FIELD OFFICE BUILDING: SUITE 204

1000 BALLPARK WAY • ARLINGTON, TX 76011

**FOR LEASE**  
**1,883 SF Office Space**



Briggs  
Freeman | Sotheby's  
INTERNATIONAL REALTY

COMMERCIAL DIVISION

## Contact Information

Jamie Adams  
c 817.235.4535  
jamie@jamieadams.com

Laura Fincher  
c 512.810.2215  
lfincher@briggsfreeman.com

# CENTER FIELD OFFICE BUILDING: SUITE 204

1000 BALLPARK WAY • ARLINGTON, TX 76011

**FOR LEASE**  
**1,883 SF Office Space**

## PROPERTY DETAILS

- › **Location:** Suite 204
- › **Size:** 1,883 SF
- › **Lease Rate:** \$28.50 - \$29.50 SF
- › **NNN's:** ADD

## PROPERTY HIGHLIGHTS

- › Rare opportunity to lease office space in the Center Field Office Building located at Globe Life Park in Arlington, Texas.
- › Excellent executive office suite views overlooking the baseball field at Globe Life Park.
- › Prime location in Arlington, Texas just 12 miles east of downtown Fort Worth and 20 miles west of downtown Dallas.
- › Close proximity to the AT&T Stadium (formerly Cowboys Stadium), The University of Texas at Arlington, Six Flags Over Texas, multiple hotels, restaurants and retailers.
- › Parking available in parking lot directly outside of stadium office suites.

## WHY ARLINGTON?

- › **Major Airport Access:** 8 miles from DFW International Airport, providing access to non-stop flights to over 200 destinations.
- › **World-Class Entertainment:** Home of the Dallas Cowboys and Six Flags Over Texas Theme Park and is known as the premier entertainment hub of the region.
- › **Educational Assets:** Home to The University of Texas Arlington, with over 34,000 students and is a growing research powerhouse.
- › **Regional Access:** DFW is a thriving metropolis of over 6.5 million people that spans in every direction and Arlington is in the center of the action.
- › **Recent Investments:** D.R. Horton moving headquarters to Arlington and bringing 500 jobs, GM announces \$1.4 billion plant expansion and Texas Live! developing a \$250 million Entertainment Complex & Hotel/Convention Facility.

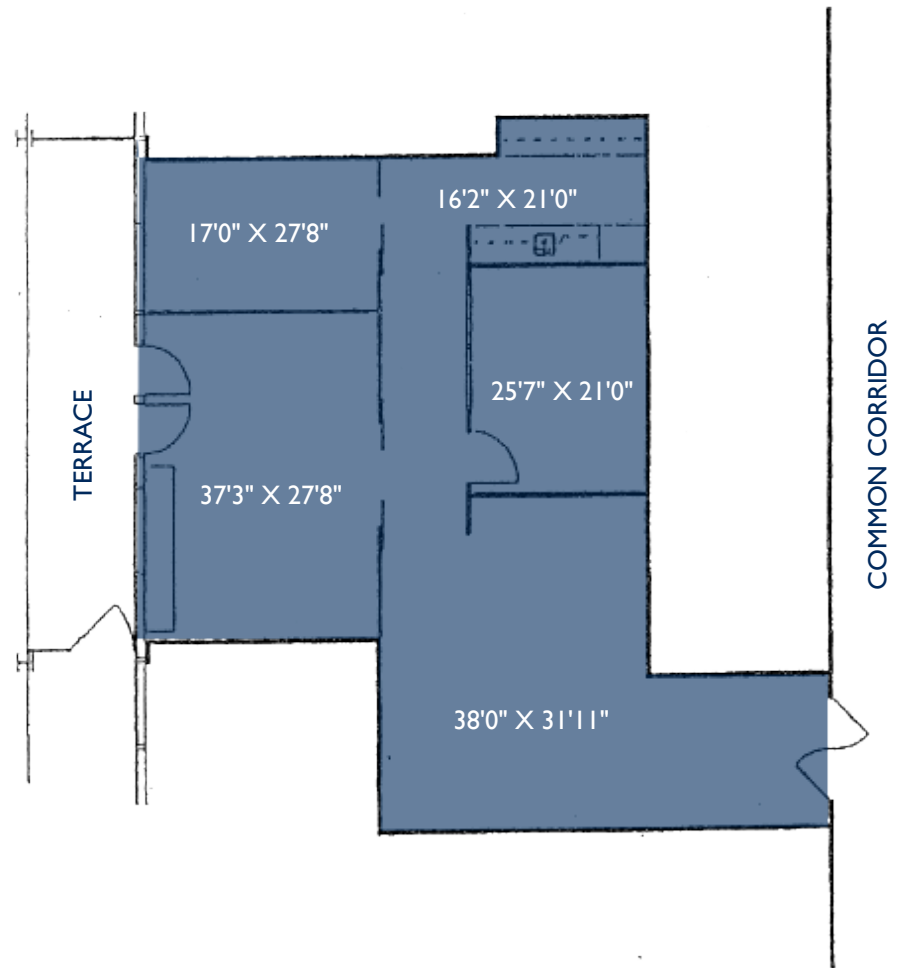


# CENTER FIELD OFFICE BUILDING: SUITE 204

1000 BALLPARK WAY • ARLINGTON, TX 76011

**FOR LEASE**  
**1,883 SF Office Space**

**SUITE 204: 1,883 SF**



# CENTER FIELD OFFICE BUILDING: SUITE 204

1000 BALLPARK WAY • ARLINGTON, TX 76011

**FOR LEASE**  
**1,883 SF Office Space**

